



# STERO SC-24

## RACK MODULAR CONVEYOR SERIES



The **STERO Hi-Temp SC-24** Modular Conveyor provides flexibility and maximum warewashing power in a minimum amount of space. The Modular System is the only warewashing solution that can be designed around a problem dishroom. The SC-24 includes a 90° power wash engineered to fit in a corner followed by a fresh water rinse section. Additional modules may be added to complete a warewashing system of your choice.

The SC Modular Series is the only true corner dishwashing system, eliminating the need for side-loaders, power loaders and un-loaders. It transforms these non-washing transition pieces into actual washing areas. Both soiled and clean dish table space can be gained because STERO's large volume conveyor utilizes previously unused space.

### STANDARD FEATURES

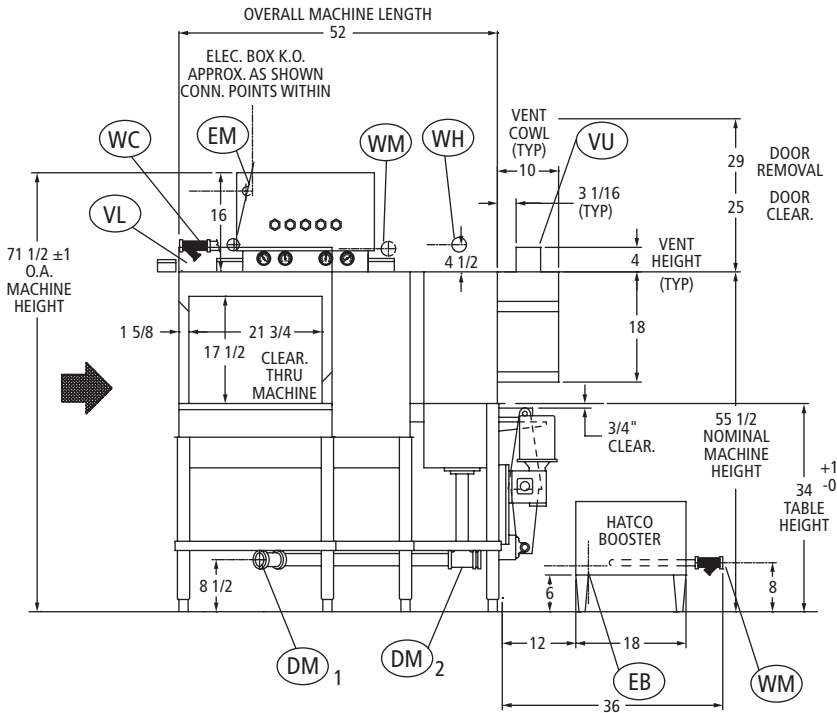
- 136 racks per hour
- Rinse 5.02 gpm /2.21 gallons per rack
- 17½" opening
- Automatic fill maintains proper tank levels
- Automatic start, rack activated switch starts conveyor and pumps
- Automatic shut down stops operation during idle periods
- 2 HP wash motor recirculating 225 gpm
- Single point drain connection
- Center-fed wash manifold
- Stainless steel front enclosure panel protects motors and controls from moisture
- Door interlock switches prevents operation if door is open
- Stainless steel drain valves and poppets, foot activated
- Kit 55, included prv, shock arrestor and pressure gauge in final rinse line
- Bell-type stainless steel skimmer acts as overflow and removes fats and oils from the wash tank

### OPTIONS & ACCESSORIES

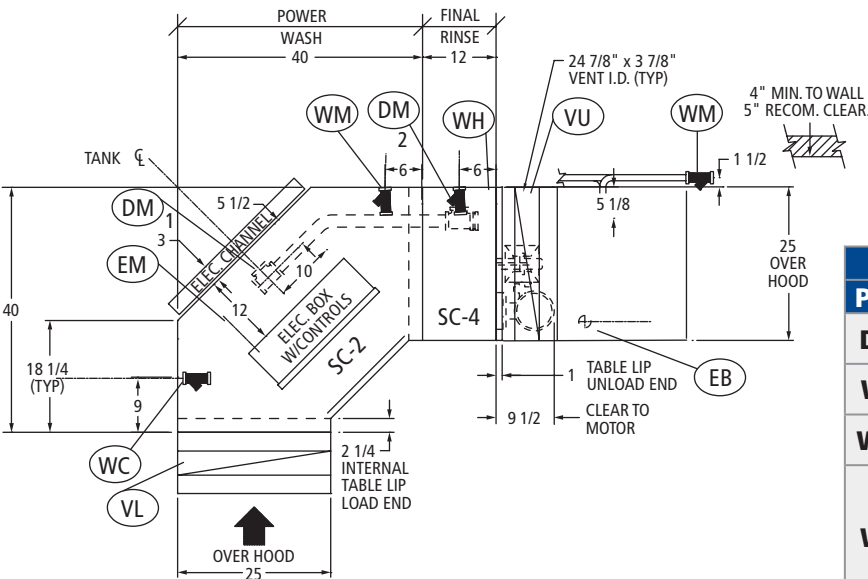
- Right to Left / Left to Right Operation
- Low Temp, Chemical Sanitizing
- Cold Water Aquastat
- Vent Cowls
- Hatco Electric Booster Heater
- Steam Booster
- Low Water Option
- Table Limit Switch
- Correctional Package
- Drain Water Tempering Kit
- Voltage
  - 208V 220V 480V 60cy 3ph
- International options available, consult factory

# STERO SC-24

## RACK MODULAR CONVEYOR SERIES



SC-24 ELECTRIC L-R



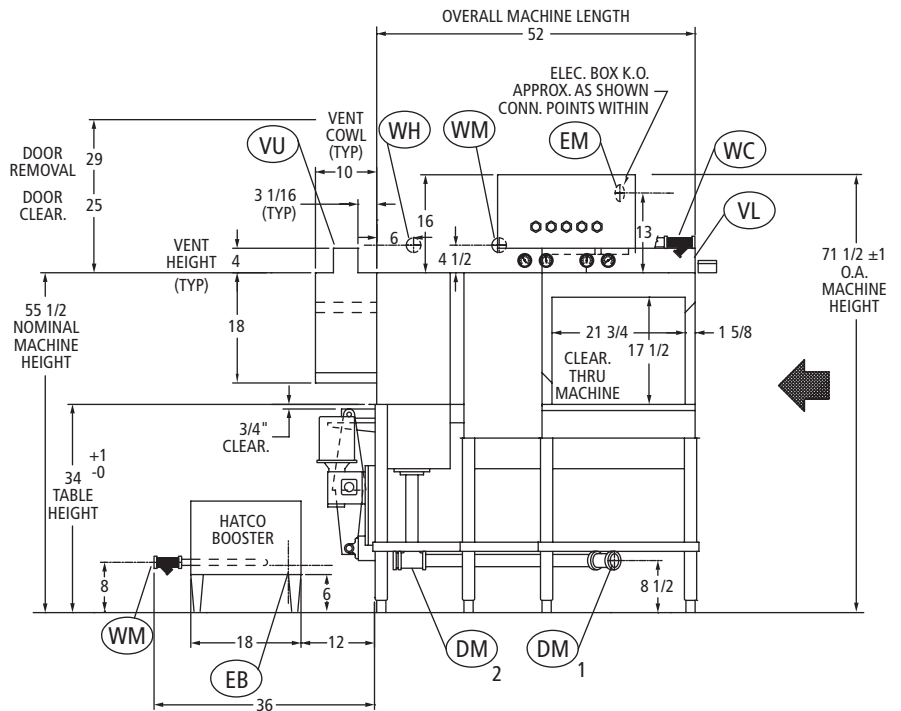
CUSTOMER'S CONNECTION POINTS		
PTS.	SIZE	DESCRIPTION
DM	2" NPT (F)	DRAIN, MACHINE WASTE: LEAVE UNUSED PORTS PLUGGED
WC	3/4" NPT (F)	WATER SUPPLY: COLD AS AVAILABLE @ 20-40 PSI*
WM	3/4" NPT (F)	WATER SUPPLY: 140°F MIN. TANK FILL @ 20-40 PSI
WH	3/4" NPT (F)	WATER SUPPLY: 301 GALS./HR. @ 20 PSI WITHOUT BOOSTER..... 180°F MIN. WITH 40° RISE BOOSTER... 140°F MIN. WATER SUPPLY W/LOW WATER OPTION: 120 GALS./HR. @ 20 PSI
EM	ELECTRICAL REQ.	ONE FEEDER SIZED FOR: 1. WASH PUMP MOTOR.....2 HP 2. CONVEYOR MOTOR .....1/4 HP 3. WASH TANK HEAT ..... 10 KW
EB	ELECTRICAL REQ.	ONE (1) FEEDER SIZED FOR: 36 KW OR 57 KW BOOSTER
VL	NOTED	VENT, UNLOAD END: RECOM. MIN. DRAW = 200 CFM
VU	NOTED	VENT, UNLOAD END: RECOM. MIN. DRAW = 400 CFM

\* NOTE: WC APPLIES ONLY IF COLD WATER AQUASTAT OR DWT IS SPECIFIED

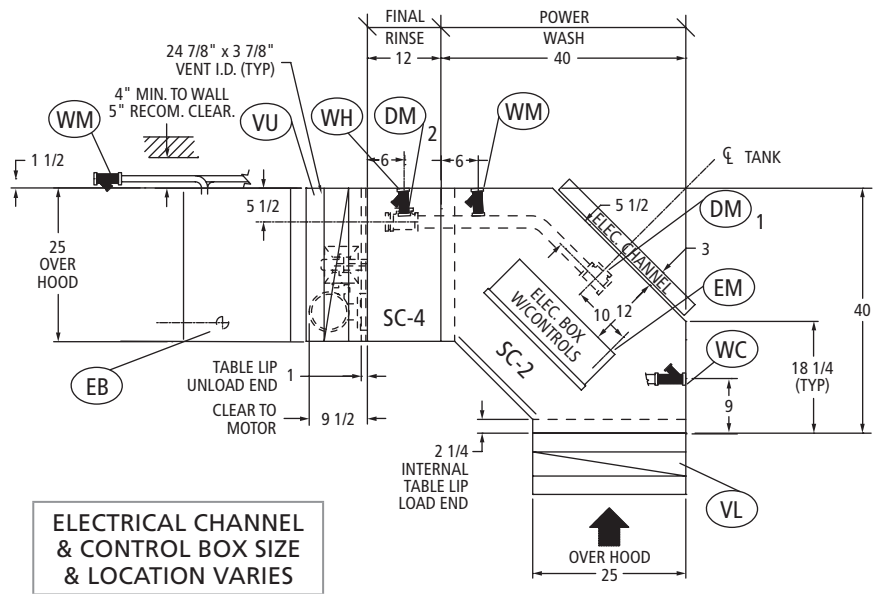


# STERO SC-24

## RACK MODULAR CONVEYOR SERIES



SC-24 ELECTRIC R-L



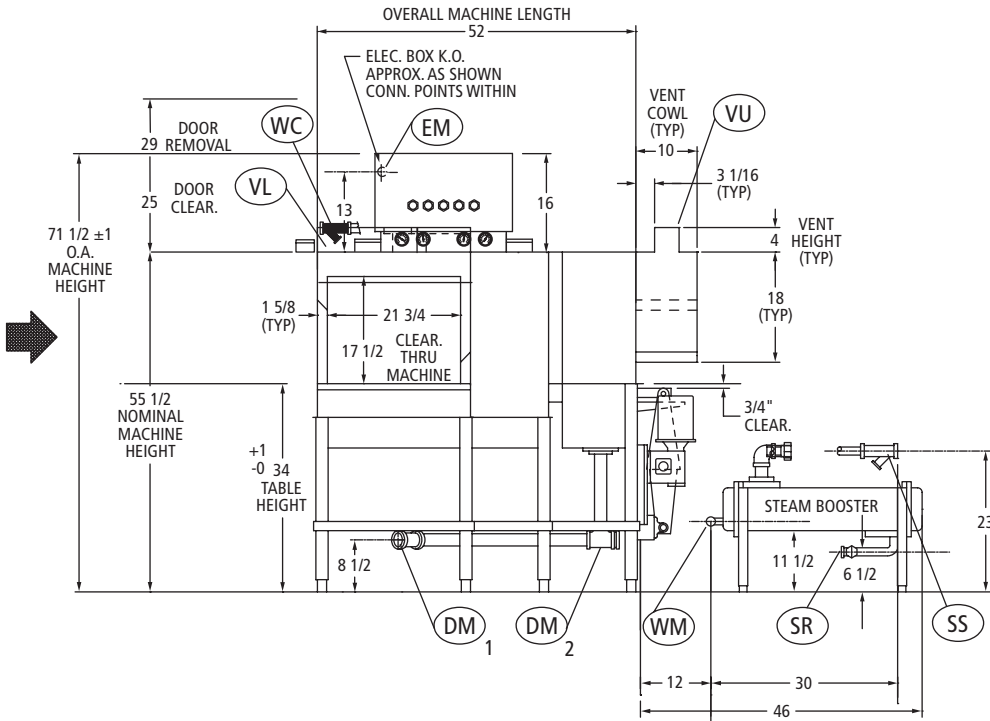
SC 2-4 WITHOUT BOOSTER		
VOLTAGE	RATED AMPS	MAX PROTECTIVE DEVICE
<b>ELECTRIC TANK HEAT, TOTAL LOAD</b>		
208/60/3	35.3	50
240/60/3	33.5	50
480/60/3	15.6	20

ADDITIONAL CIRCUIT FOR OPTIONAL BOOSTER		
ELECTRIC BOOSTER HEAT		
VOLTAGE	36 KW (40° RISE)	MAX PROTECTIVE DEVICE
208/60/3	100.0	36KW = 125
240/60/3	86.7	36KW = 125
480/60/3	43.3	36KW = 60

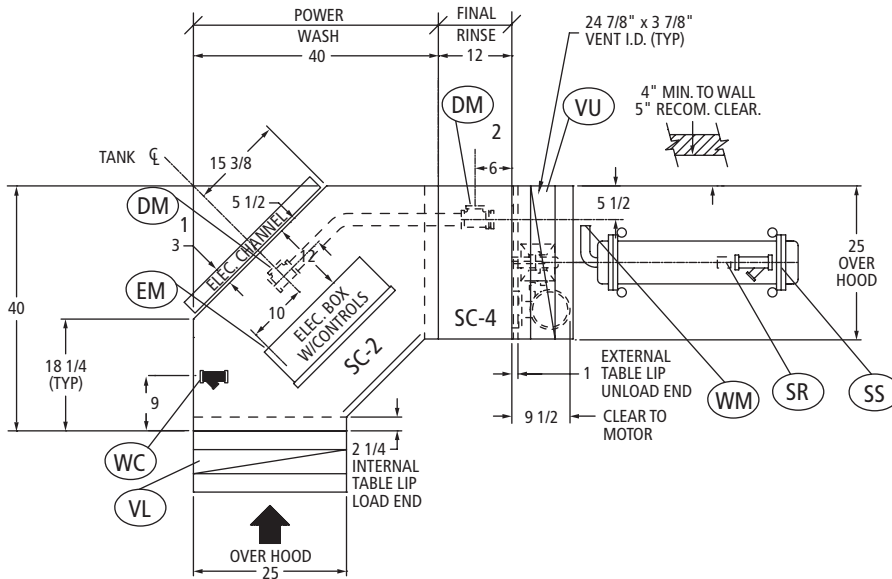
ADDITIONAL CIRCUIT FOR OPTIONAL BOOSTER		
ELECTRIC BOOSTER HEAT		
VOLTAGE	57 KW (70° RISE)	MAX PROTECTIVE DEVICE
208/60/3	158.4	57KW = 200
240/60/3	137.3	57KW = 175
480/60/3	68.6	57KW = 90

# STERO SC-24

## RACK MODULAR CONVEYOR SERIES



SC-24 STEAM L-R



CUSTOMER'S CONNECTION POINTS		
PTS.	SIZE	DESCRIPTION
DM	2" NPT (F)	DRAIN, MACHINE WASTE: LEAVE UNUSED PORTS PLUGGED
WC	3/4" NPT (F)	WATER SUPPLY: COLD AS AVAILABLE @ 20-40 PSI*
WM	3/4" NPT (F)	WATER SUPPLY: 140°F MIN. TANK FILL @ 20-40 PSI
WH	3/4" NPT (F)	WATER SUPPLY: 301 GALS./HR. @ 20 PSI WITHOUT BOOSTER..... 180°F MIN. WITH 40° RISE BOOSTER..... 140°F MIN. WATER SUPPLY W/LOW WATER OPTION: 120 GALS.HR. @ 20 PSI

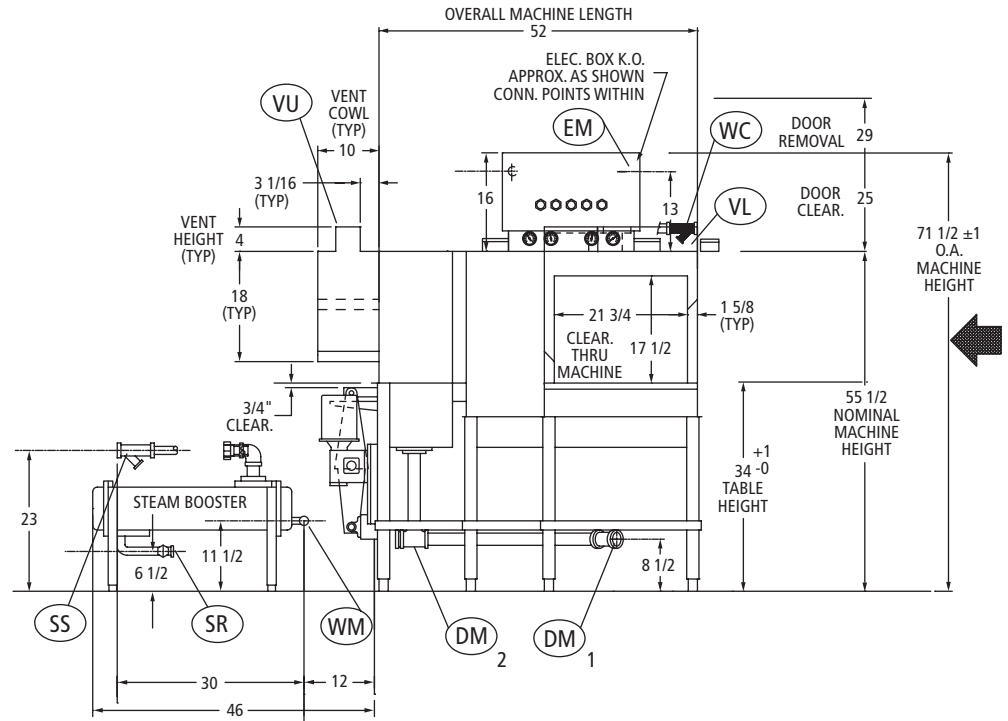
\* NOTE: WC APPLIES ONLY IF COLD WATER AQUASTAT OR DWT IS SPECIFIED

CUSTOMER'S CONNECTION POINTS		
PTS.	SIZE	DESCRIPTION
SS	3/4" NPT (F)	STEAM SUPPLY: 15-40 PSI CONSUMPTION = 20 PSI WITH SWB 180 BOOSTER ..... 120 LBS/HR (LOW WATER OPTION) WITH SWB 260 BOOSTER ..... 150 LBS/HR
SR	1/2" NPT (F)	STEAM RETURN:
EM	ELECTRICAL REQ.	ONE FEEDER SIZED FOR: 1. WASH PUMP MOTOR..... .2 HP 2. CONVEYOR MOTOR..... .1/4 HP
VL	NOTED	VENT, LOAD END: RECOM. MIN. DRAW = 200 CFM
VU	NOTED	VENT, UNLOAD END: RECOM. MIN. DRAW = 400 CFM

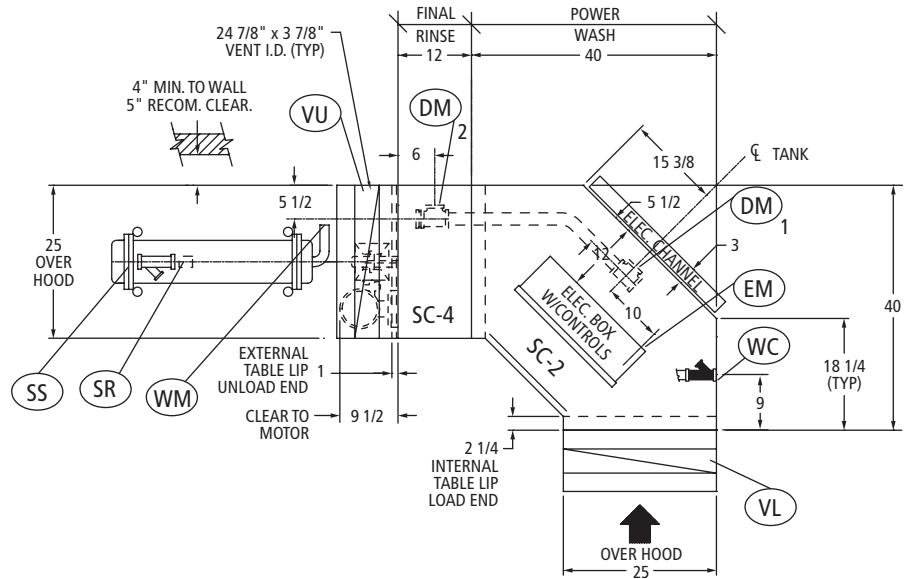


# STERO SC-24

## RACK MODULAR CONVEYOR SERIES



SC-24 STEAM R-L



SC 2-4 WITHOUT BOOSTER		
VOLTAGE	RATED AMPS	MAX PROTECTIVE DEVICE
<b>STEAM TANK HEAT, TOTAL LOAD</b>		
208/60/3	7.5	15
240/60/3	7.2	15
480/60/3	3.6	15

ELECTRICAL CHANNEL & CONTROL BOX SIZE & LOCATION VARIES

# STERO SC-24

## RACK MODULAR CONVEYOR SERIES



**Design:** Single tank Rack Conveyor designed for 20" racks with a 90° power wash module and a sanitizing fresh water final rinse. Flexible strip curtains at each end prevent splash out. A large lift up inspection door allows easy access to interior of machine for cleaning and maintenance.

**Construction:** The tank and hood are formed from 16 gauge, type 304/18 – 8 No. 4 mill finish stainless steel, all fully welded with a minimum of bolt together construction. The frame of each unit is constructed of stainless steel and flat stock conforming to NSF standard No. 3. The machine is supported by stainless steel feet. All internal construction is stainless steel.

**Power Wash:** STERO's unique 90° Power Wash Module is equipped with stainless steel manifolds, center-fed, fitted with stricture free jets and directional vanes which can be easily removed without tools. Center fed manifolds distribute an even flow of wash water over the entire perimeter of the rack, ensuring consistent results. The SC-24 distributes 225 GPM of detergent water pumped over the ware by a 2 HP motor and pump assembly.

**Final Rinse:** Stainless rinse arms mounted above and below are fitted with directional fanjets that create a full coverage spray pattern for maximum rinsing and sanitation. The rack activates STERO's final rinse switch and hot water solenoid valve with stainless steel seat. A vacuum breaker mounted downstream from the solenoid and 6" above the upper rinse complete STERO's rinse system. The CSA units sanitize with chlorine dispensed through the rinse nozzles, which eliminates the need for a 180° final rinse booster.

**Conveyor:** A center-drive stainless steel pawl bar with stainless steel pawls conveys the racks through the spray pattern and out onto the clean dish table. The conveyor is powered by an integral ¼ HP motor and speed reducing drive which has a built-in release to prevent damage to racks or machine in the event of a rack jam. The racks ride on 12 gauge stainless steel tracks. Curved pawl bar and track guides the rack through a 90° turn, indexing the rack over the spray manifold.

**Drain Valves:** STERO designed poppet-type drain valve, stainless steel seats and casting assures leak proof and trouble free life. Externally controlled with spring-loaded shafts to prevent damage.

**Common Drain:** STERO connects overflow and drain valves so that one drain rough-in will service the entire machine.

**Kit 55:** STERO mounts a ¾" pressure reducing valve, shock-arrestor and flow pressure gauge in the final rinse line prior to the rinse solenoid valve.

The shock-arrestor prevents line hammer and will double the life of the valve. The PRV will allow adjustment of the final rinse pressure and the gauge will give visual proof when it is correct.

**Standard Electrical Features:** All motors on STERO conveyor machines are factory wired in waterproof conduit and fittings to a common connection point. The motors are protected by thermal-overloads with manual reset buttons. The magnetic motor starters, start-stop switches, and electric tank heating element contactors (when specified) are mounted in a stainless steel control box for one point connection.

**Door Safety Switch:** Prevents the machine from operating if the door is open. The machine will automatically shut-off if the door is opened while the washer is running.

**Thermometers:** One each for wash and final rinse.

**Pumps & Motors:** 2 HP, 1750 rpm, 225 GPM, heavy duty with sealed bearings and overload protection. The pumps have easily removable inspection plates—front and end—and are self draining. Stainless steel perforated strainer pans cover the tank.

## TANK HEATING OPTIONS

**Electric:** Stainless steel elements totaling 10 kW are mounted in the bottom of the wash tank. The unit is thermostatically controlled and has STERO's low water protection system. The elements, thermostat, LWP and contactor are all inter-wired to the control panel.

**Steam Injectors:** Two stainless steel injectors with silencers are mounted in the tank. A thermostat controls a special solenoid valve, and maintains the correct temperature.

**Steam Coils:** STERO designed and built stainless steel steam coils are mounted in the tank. Steam coils allow condensed steam to be returned to the steam generator, a decided advantage when there is a question of steam purity. A thermostat controls a special steam solenoid valve and maintains the correct temperature. A steam trap is mounted on the steam return line.

*In line with its policy to continually improve its products, Stero reserves the right to change materials and specifications without notice.*